



DESIGN SUMMARY

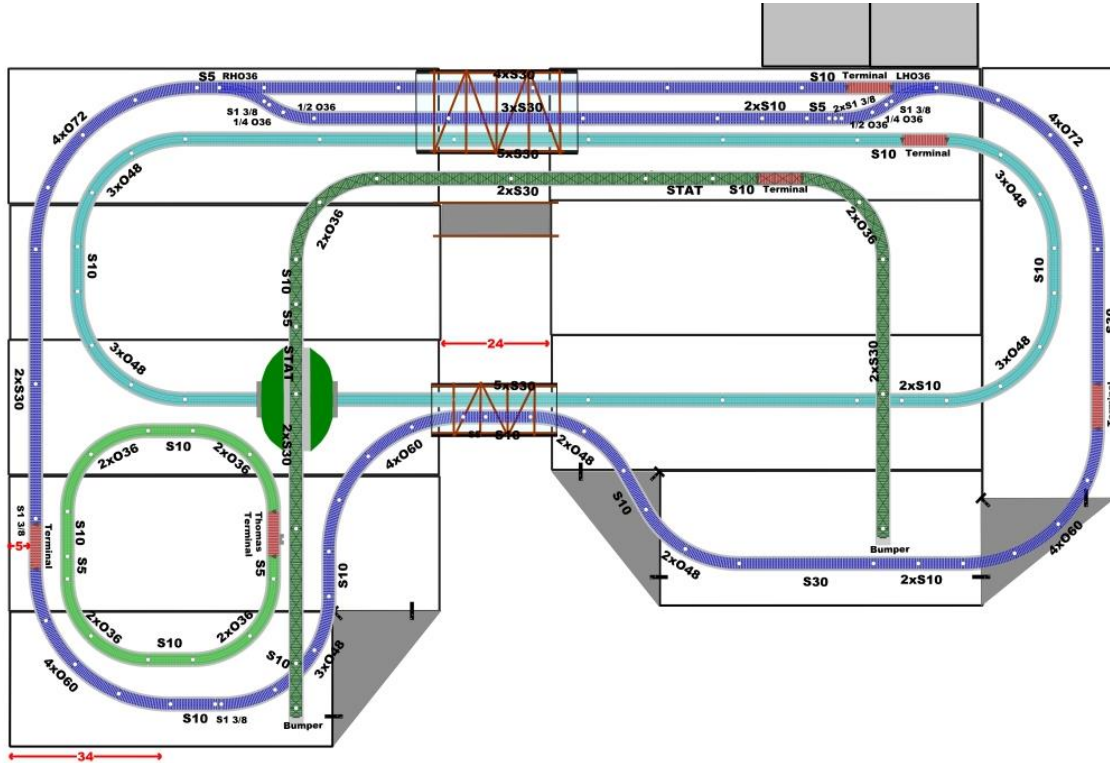
For

M3R Model Train & Dollhouse Show

Version: R2b

Event Coordinator: Sam Carr

Layout Designer: Art Shean



- Location:** Augusta Armory, 179 Western Ave, Augusta, ME 04330
- Run Trains:** February 18, 10am - 3pm
- Dimensions:** 12.5' x 20.5', 212+ square feet
- Tables:** 8 - 2 1/2' x 8', 2 1/2' x 6' Tables, & 1 - 2' x 4' Control Table
- Track:** 156+ - Lionel FasTrack, 3 Independent Loops & 1 Elevated Trolley Line
- | | |
|---|----|
| 6-12042, 0 Lionel FasTrack, Straight 30". | 27 |
| 6-12014, 0 Lionel FasTrack, Straight 10". | 20 |
| 6-12024, 0 Lionel FasTrack, Straight 5". | 6 |
| 6-12073, 0 Lionel FasTrack, Straight 1 3/8". | 6 |
| 6-12016, 0 Lionel FasTrack, Terminal section 10". | 5 |
| 6-37110, 0 Lionel FasTrack, Lion Chief Terminal section 10". | 1 |
| 6-84373, 0 Lionel FasTrack, Straight 15". Announcement Track | 2 |
| 6-12059, 0 Lionel FasTrack, Buffer/Bumper 3 5/8". | 2 |
| 6-12015, 0 Lionel FasTrack, Curve 18", angle 45° (O36) | 12 |
| 6-12022, 0 Lionel FasTrack, Curve 18", angle 22.5° (O36) | 2 |
| 6-12023, 0 Lionel FasTrack, Curve 18", angle 11.25° (O36) | 2 |
| 6-12043, 0 Lionel FasTrack, Curve 24", angle 30° (O48) | 19 |
| 6-12056, 0 Lionel FasTrack, Curve 30", angle 22.5° (O60) | 12 |
| 6-12041, 0 Lionel FasTrack, Curve 36", angle 22.5° (O72) | 8 |
| 6-81946, 0 Lionel FasTrack, Right turnout 10". (O36) Remote/Command | 1 |
| 6-81947, 0 Lionel FasTrack, Left turnout 10". (O36) Remote/Command | 1 |

Bridges: 1- MTH 40-1070 Over/Under Tunnel, 1- Triple Track 36" Wood Truss Bridge, 1- Dual Track 28" Wood Truss Bridge, 1- Single Track 28" Wood Girder Bridge, 1- 28" X 7" Street Girder Bridge, 3- 24"x30" Corner Fill, & 4 Lionel 6-12038 Elevated Trestle Sets

Roads: 43' of 6" Wide Asphalt

